



**DEARBORN
PUBLIC
HEALTH**

DEARBORN COMMUNITY HEALTH ASSESSMENT AND IMPROVEMENT PLAN *EXECUTIVE SUMMARY*



2025

EXECUTIVE SUMMARY

VISION

A vibrant community that embraces diversity and reduces health disparities by providing equitable access to opportunities and resources that improve the health and well-being of all Dearborn residents.

The City of Dearborn Public Health (DPH) embarked on a comprehensive Community Health Needs Assessment (CHNA) and Community Health Improvement Plan (CHIP) process to understand and address the most pressing health needs of its residents. Guided by the Mobilizing for Action through Planning and Partnerships 2.0 (MAPP 2.0) Framework, developed by the National Association of County and City Health Officials (NACCHO), MAPP 2.0 provided a community-driven, multi-sector strategic planning process that helps communities identify public health needs and resources, prioritize health issues, and develop strategies to improve the community's health and well-being. MAPP 2.0 emphasizes the importance of involving diverse partners and key sector representatives, as well as engaging the community to highlight the necessity for changes in policy, systems, and the environment. These changes are essential to address social inequities that inevitably lead to health disparities.

A Core Team made up of representatives from DPH and the Michigan Public Health Institute (MPHI) led the process, providing guidance and making final decisions, while the Steering Committee supported the process. Together, these committees engaged in a three-phase approach of data collection and analysis, which culminated in the identification of four priority areas. This summary includes a brief overview of the priority strategic issues, highlighting key data, and associated goals for improvement.

CORE TEAM

DEARBORN DEPARTMENT OF PUBLIC HEALTH

- ALI ABAZEED, MPH, MPP
- HAYAT HACHEM, MHI
- SARA ELHASAN, MPH

MICHIGAN PUBLIC HEALTH INSTITUTE

- JEANETTE BALL, MS
- MADELINE STARR
- ERIN SMILEY, MPH, CHES
- AMANDEEP KAUR, MPH

STEERING COMMITTEE MEMBERS

ELIZABETH ASHLEY

Henry Ford Medical Center

ASRAA BAZZI

Arab Community Center For Economic
and Social Services (ACCESS)

HASSAN BEYDOUN

Student Intern

SARAH CHABAN

University of Michigan - Dearborn
Public Health Student

JENNA CHAMI

Wayne County Health Department

RABIH DARWICHE

Hype Recreation Center

BILAL HAMMOUD

American Arab Chamber Of Commerce

NANCY HARMON

Neighborhood Representative

WAEEL HATAHIT

Arab Community Center For Economic
and Social Services (ACCESS)

ZAHRA KOUSSAN

American Cancer Society

JENNIFER NAGY

Cancer Center Partnerships

CARMEL PRICE

University of Michigan - Dearborn

KEISHA RENDER

Centers for Family Development, Inc.

NATALIE SAMPSON

University of Michigan - Dearborn

AMANDA SEARS

The Senior Alliance

KARI WOLOSZYK

Corewell Health - Dearborn Hospital



DEARBORN
PUBLIC
HEALTH

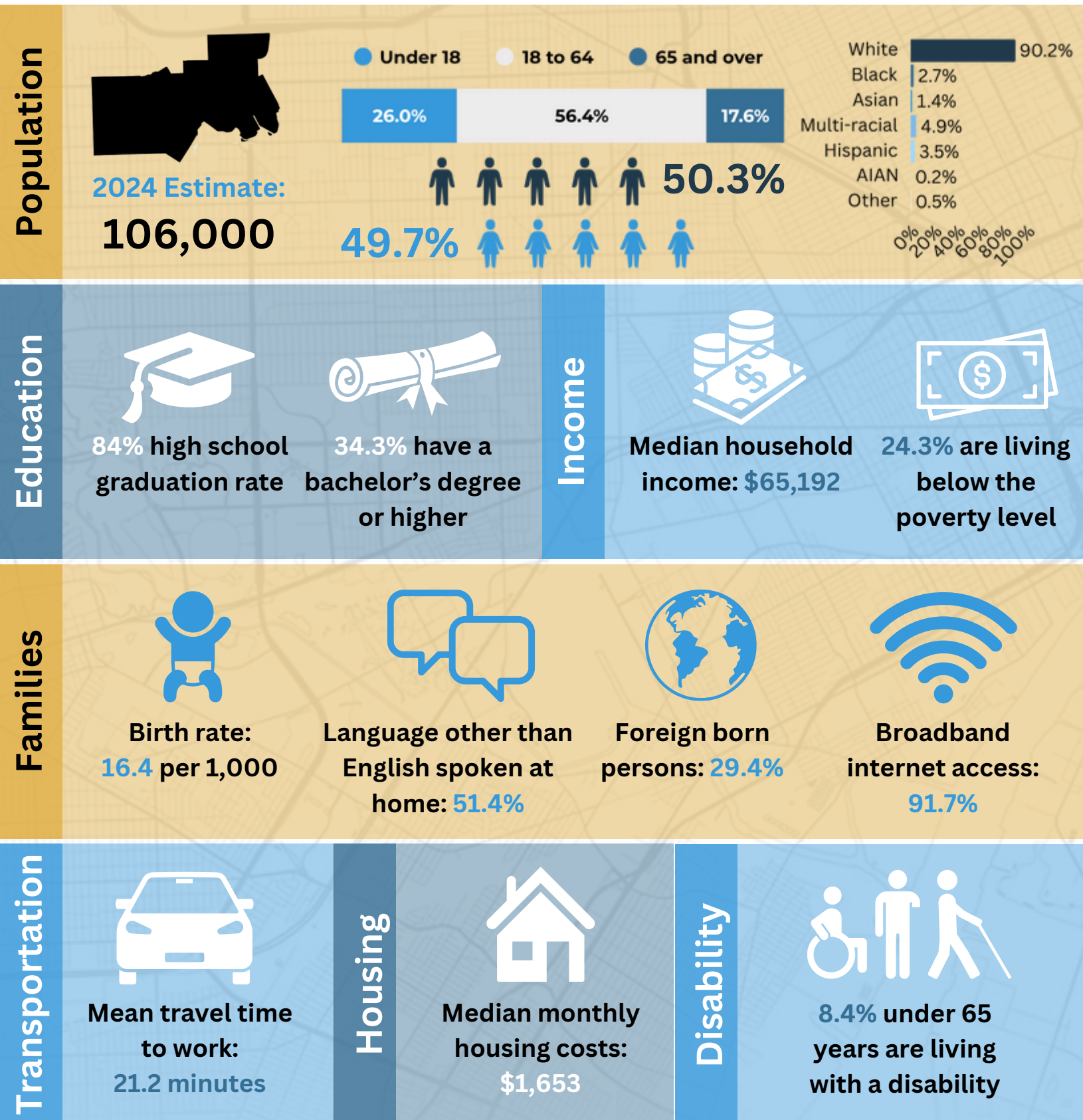


Report prepared by: Michigan Public Health Institute - Center for Healthy Communities



Photos by: Like the Planet Photography

DEARBORN DEMOGRAPHICS





Mental and Behavioral Health Supports & Services

Strategic Issue: There is an urgent need for mental and behavioral health supports and services that address barriers such as cultural and social stigma.

- **Goal 1:** Reduce cultural and social stigmas around talking about and receiving mental and behavioral health services/supports.
- **Goal 2:** Increase accessibility to mental and behavioral health services and supports.

Data Highlights:

Poor Mental Health

Dearborn residents experiencing poor mental health (on at least 14 days in the past month)

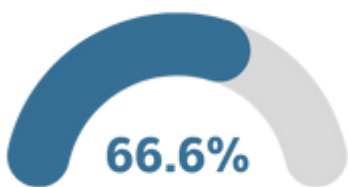


19.4%

Compared to 16.9% of Out-Wayne County and 16% of Michigan.

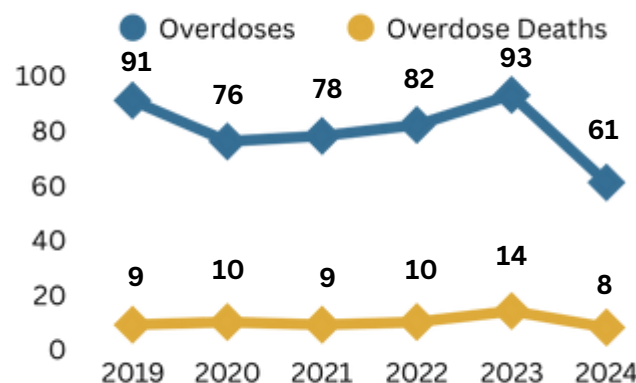
(Dearborn 2021, Out-Wayne and Michigan 2020-2022)

Stigma*



Of survey respondents “Agreed” or “Strongly Agreed” that the stigma surrounding mental health impacts help-seeking behaviors in the Dearborn Community (n=1,124)

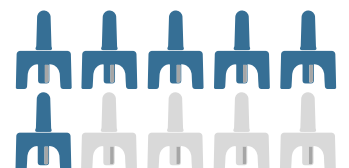
Drug Overdoses & Related Deaths



Narcan Administration

59%

of reported overdoses were administered Narcan in 2024



Community Focus Groups

Participants elevated mental health as a priority community concern. During discussions, participants raised awareness of high levels of stress among residents, stigma surrounding mental health, access to and affordability of mental health care, and special concerns regarding first generation immigrants.

See the full report for the comprehensive data summaries.

*Data from the 2024 Dearborn Community Survey



Maternal and Child Health

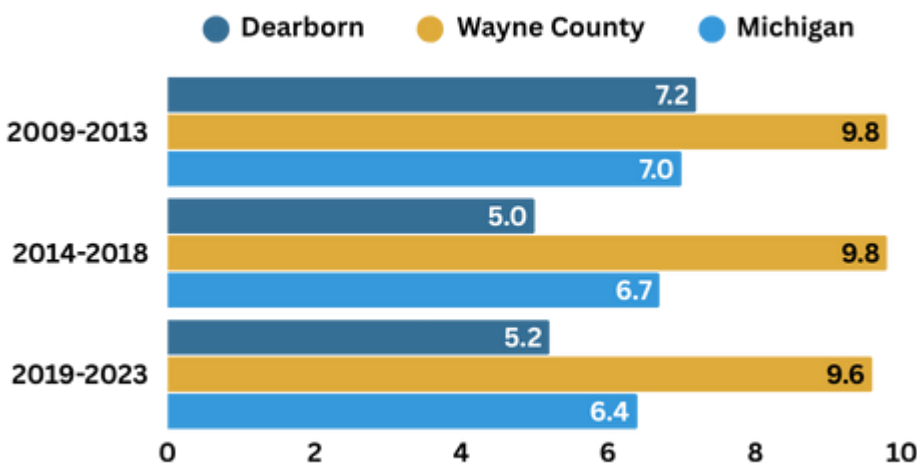
Strategic Issue: Maternal and child health outcomes highlight the need for comprehensive support throughout all stages of pregnancy and early childhood, which is essential for fostering a healthier future generation.

- **Goal 1:** Provide support to achieve successful and healthy pregnancies and positive maternal outcomes.
- **Goal 2:** Increase positive health outcomes for infants and children.

Data Highlights:

Infant Death Rate

5-Year Comparison



Postpartum Depression*



26.2%

Of respondents strongly agreed/agreed to experiencing postpartum depression (n=870)



62.9%

Of respondents who experienced postpartum depression were diagnosed (n=307)

5 Year Estimated Percent Living Below Poverty

35.5%



Of children in Dearborn live in households with incomes below the federal poverty level

Total 2023 Medicaid Paid Births in Dearborn

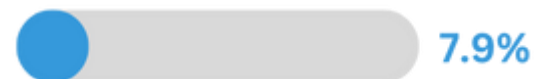
63.5%



Of births were paid for by Medicaid, compared to **38.5%** in Michigan

Infant Data

Percent of infants who had low birth weight (less than 2,500 grams)



Percent of infants who had very low birth weight (less than 1,500 grams)



See the full report for the comprehensive data summaries.

*Data from the 2024 Dearborn Community Survey

**The infant death rate is the number of resident infant deaths divided by total resident live births X 1,000. Typically, an infant death rate is not calculated if the number of total infant deaths was below 6, however, rates were calculated in this chart for comparative and trend purposes.



Environmental Health

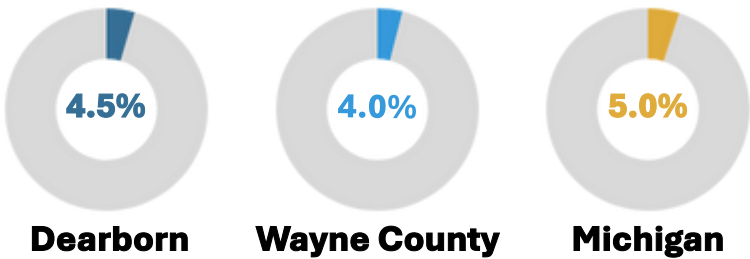
Strategic Issue: Proximity of industrial plants has led to environmental concerns, including water quality, air quality, and rates of asthma and respiratory diseases.

- **Goal 1:** Increase awareness and education of the cause and effects of environmental health.
- **Goal 2:** Improve environmental health conditions and related outcomes for all Dearborn residents.

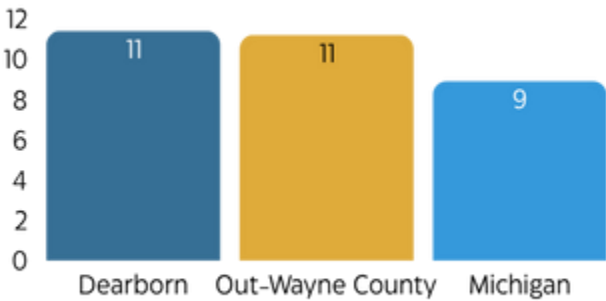
Data Highlights:

5th Leading Cause of Death (2023)

Percent of deaths due to Chronic Lower Respiratory Diseases (COPD, Chronic Bronchitis, Emphysema, Asthma)



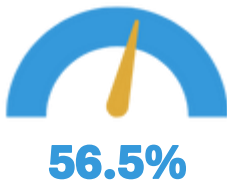
Average Daily Density of Fine Particulate Matter (PM 2.5) (2020)



Community Focus Groups

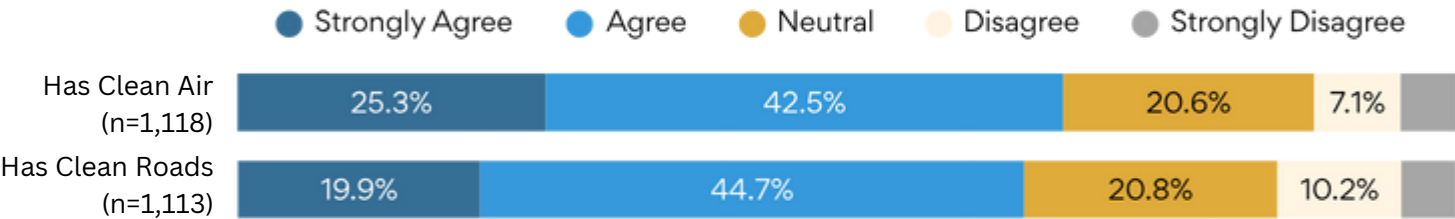
Community members shared environmental concerns regarding air quality, pollution, and cleanliness, as well as the impacts these factors have on their health. Participants elevated awareness of the health impacts affecting children and residents living in the Southend and East side of Dearborn.

Concern With Water Quality*



Of respondents are always/very/fairly concerned with the water quality in the community

Community Environment Agreement*



See the full report for the comprehensive data summaries.

*Data from the 2024 Dearborn Community Survey



Community Health Resources, Education, and Literacy

Strategic Issue: Challenges with locating and obtaining information has led to an elevated need for direct navigation support, education, and awareness of available community services and resources.

- **Goal 1:** Provide information and resources that promote and support health through a variety of communication channels, ensuring accessibility to all Dearborn residents.

Data Highlights:

Community Focus Groups

There is a great need for increased knowledge and awareness of the resources available in the community, where and how to find them, general health education, and dismantling harmful misinformation. Focus Group participants noted:



Need for increased knowledge and awareness of the resources available, where and how to find them, etc. (especially for non-English speakers)



General lack of awareness of the resources available



Need for health education for all populations (i.e., new mothers needing education on what to do after birth)



There is an abundance of misinformation on social media and the internet, which translates to individuals sharing misinformation



Often times it is difficult to communicate with the health department; calls going to voicemail



Communication is an issue across the city – information is not passed out well to residents



There is a need to provide different modes/channels of communication to meet the needs of all residents