

\$25M+

INVESTED

IN FLOOD PREPAREDNESS

REMOVED OVER

50

**LOG JAMS ACROSS
THE ROUGE RIVER**

LEVAGOOD PARK

FORD FIELD PARK

DEARBORN HILLS GOLF COURSE

CROWLEY PARK

FUTURE SITES OF

FLAP GATES & FORCED MAINS



The image shows a map of a city grid with several infrastructure projects highlighted in red. A large rectangular area in the upper center is outlined in red and labeled 'FLAP GATES'. A small red square in the lower center is labeled 'HEADWALL & PUMP'. Two red circular markers with white curved lines are labeled 'FORCED MAIN #1' and 'FORCED MAIN #2'. The map is overlaid on a blue background with a wavy pattern at the bottom.

FLAP GATES

FORCED MAIN #1

HEADWALL & PUMP

FORCED MAIN #2

PROTECTING 13,600 DEARBORN RESIDENTS

FLAP GATES

HEADWALL & PUMP

FORCED MAIN #1

FORCED MAIN #2

LONG TERM PROJECT



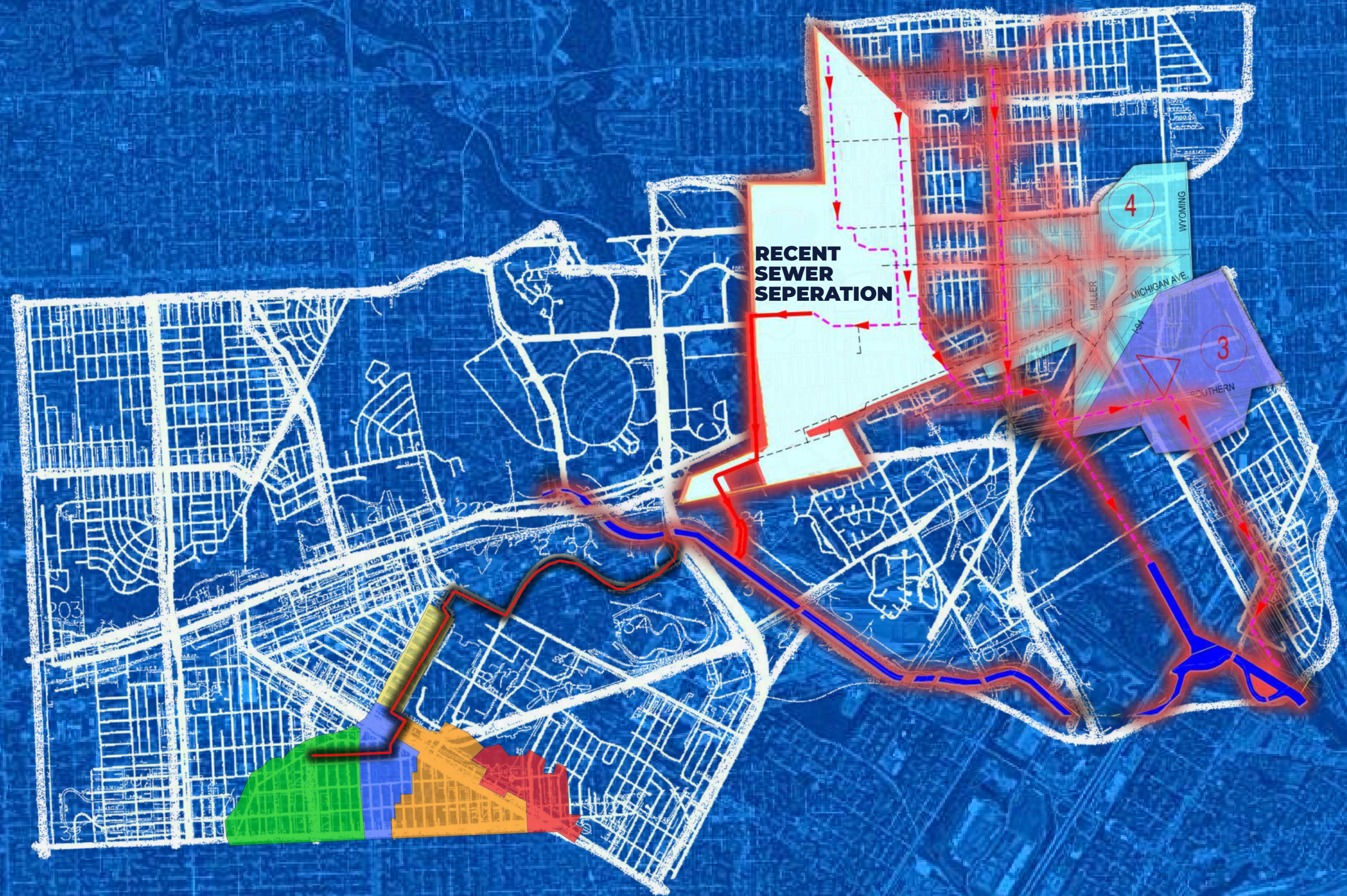
LONG TERM PROJECT

1. New Stormwater Interceptor to remove flows from the area
2. 264-acre Separation Project to reduce flow volume to the Dearborn Interceptor



LONG TERM PROJECT

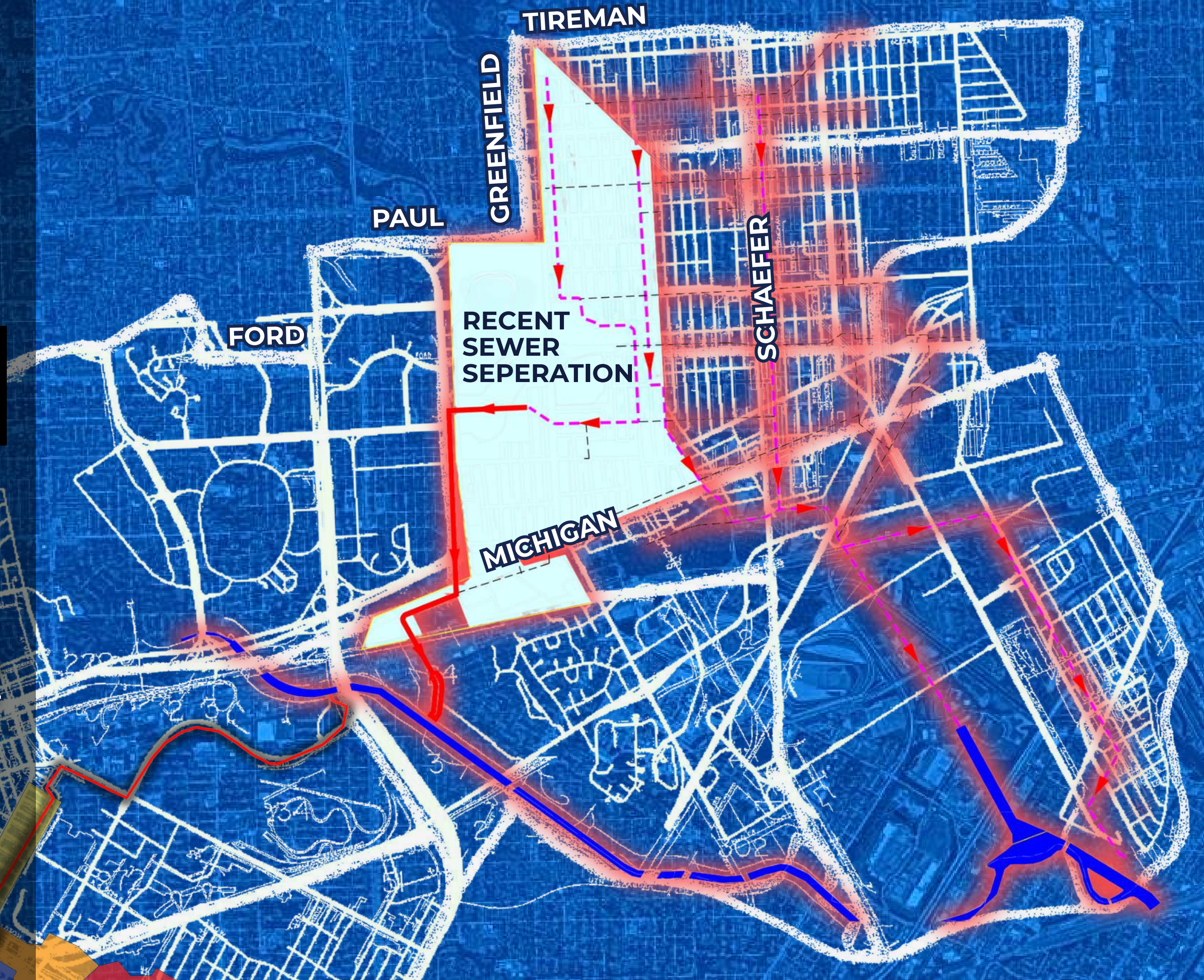
1. New Stormwater Interceptor to remove flows from the area
2. 264-acre Separation Project to reduce flow volume to the Dearborn Interceptor
3. 377-acre Separation Project to reduce flow volume to the Miller Pump Station
4. 363-acre Separation Project to reduce flow volumes to the Prospect Caisson and the Miller Pump Station
5. Detention Basin to reduce peak flow and total volume to the system



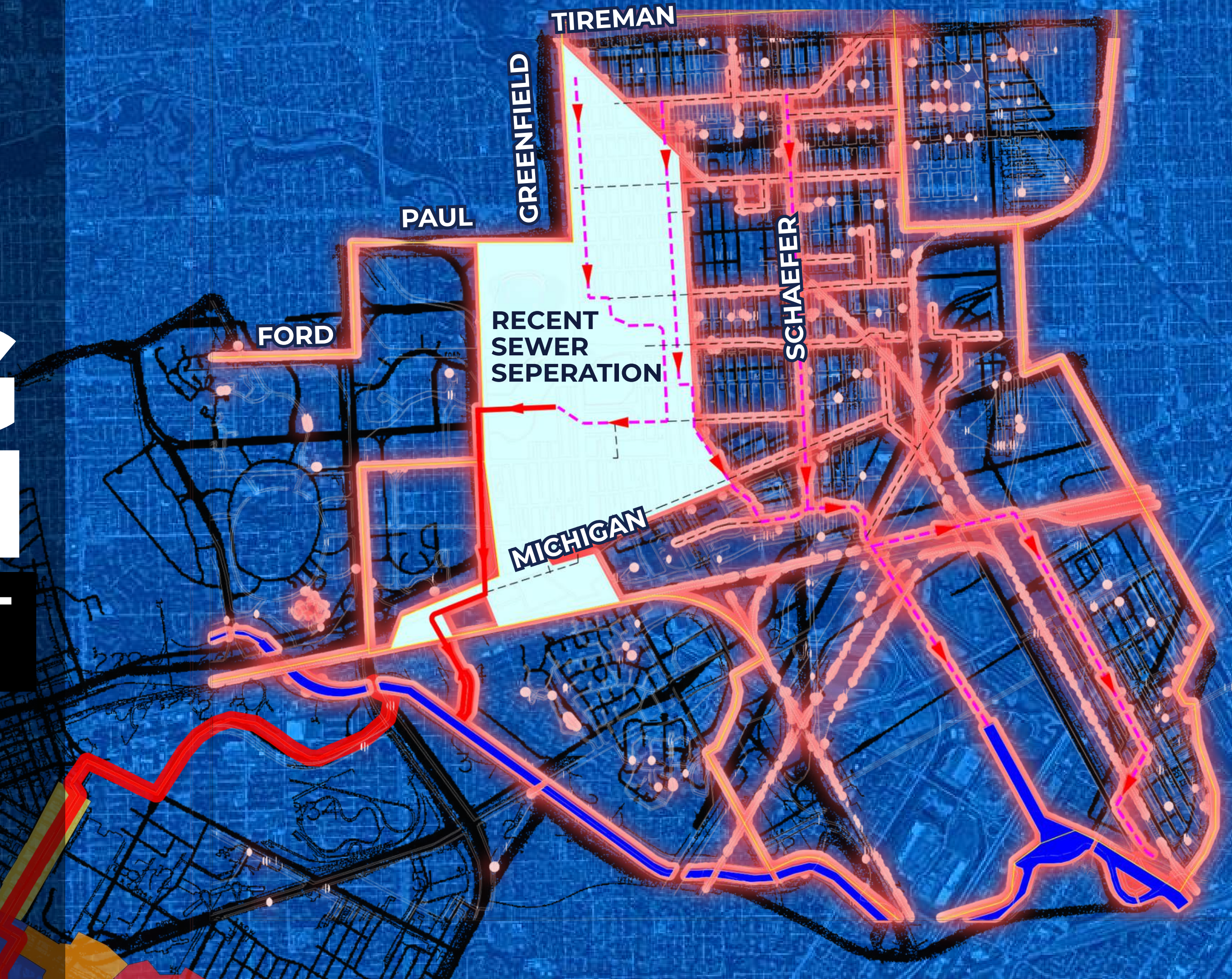
LONG TERM PROJECT

COLSON-PALMER OUTFALL PROJECT

- Inspection, Analysis & Cleaning of Existing 12' DIA. Trunk Sewer
- Cleaning to Increase Capacity from Approx. 3 Million Gallons to Approx. 7 Million Gallons
- Currently in Design Phase
- To be bid out for Tentative Construction In 2026 or 2027



LONG TERM PROJECT



\$25M+

INVESTED

IN FLOOD PREPAREDNESS